



Fishing the mid- Manawatu



Fishing the mid-Manawatu & tribs

- Where are the trout?
- How to access new and exciting fishing spots
- Having new adventure
- Methods and techniques
- Before you go

Wellington Fish & Game reports

Sports Fish Population Monitoring for Wellington Region 2021

A summary of the sports fish monitoring programme undertaken in the Wellington Fish and Game Council region in 2021. This includes an analysis of trends and changes in rainbow and brown trout populations using data derived from drift dives of randomly selected regional representative sites.

- Project Report 1111 Sports Fish Population Monitoring 2021

Email: wellington@fishandgame.org.nz

Wellington Fish & Game reports

Project report 1111

Sports Fish Population Monitoring

- Drift dive (trout count) results
- Recommendations for seasonal bag limits
- Recommendations for changes to regulations

They tell you where the trout were!

They tell you where the trout were!

YES

They tell you where the trout were!

Appendix 3. Geographic coordinates of non-Core drift dive rivers and reaches completed in 2018/2019.

<u>Mangatainoka</u>	<u>Hukanui</u>	40°35'21.08"S	175°41'0.60"E	40°35'21.65"S	175°41'41.17"E
<u>Mangatainoka</u>	<u>Mangatainoka</u> SH 1	40°25'49.44"S	175°51'12.18"E	40°25'15.38"S	175°51'54.25"E

They tell you where the trout were!



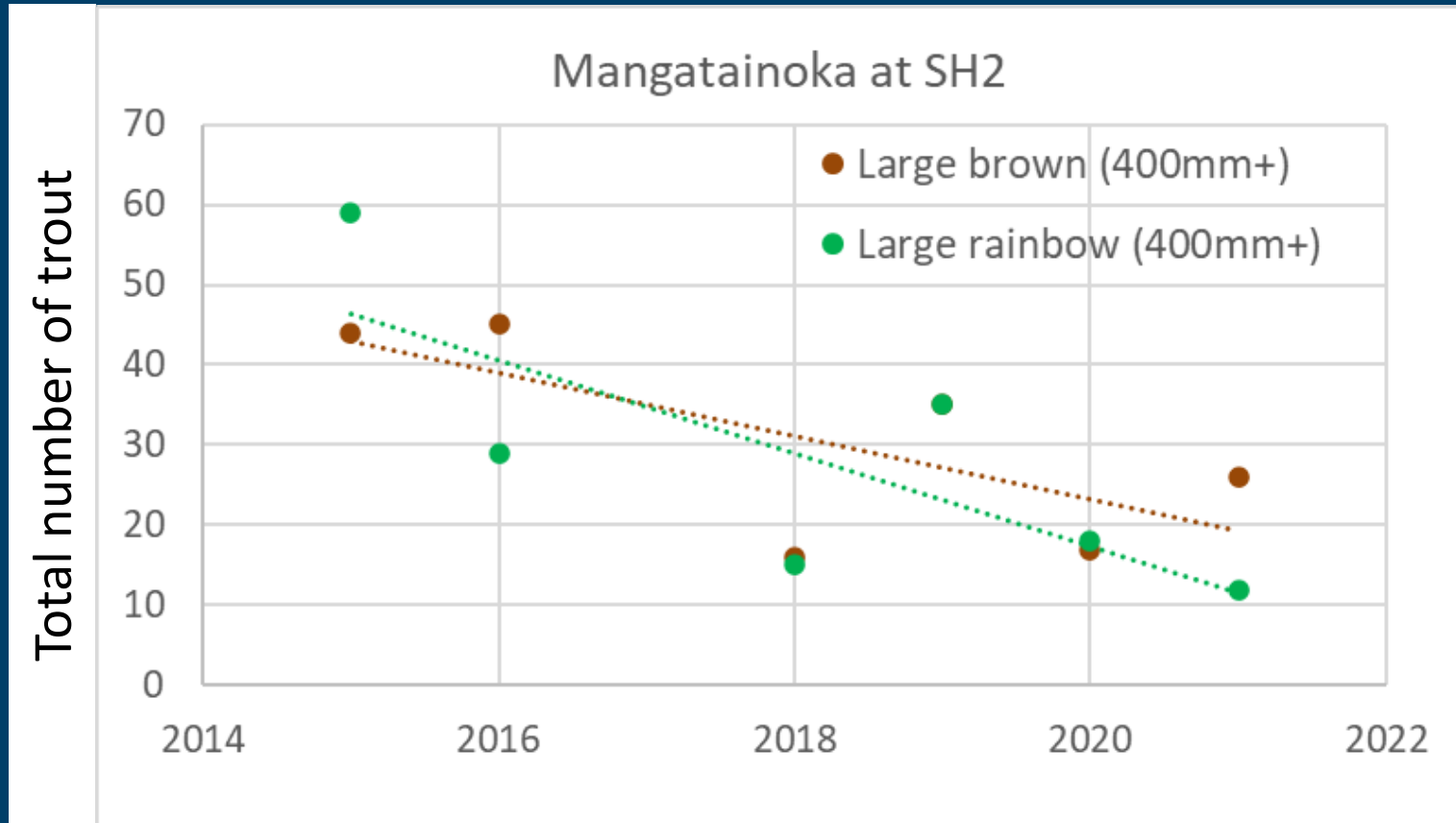
16. James Rd

And how many trout were there?

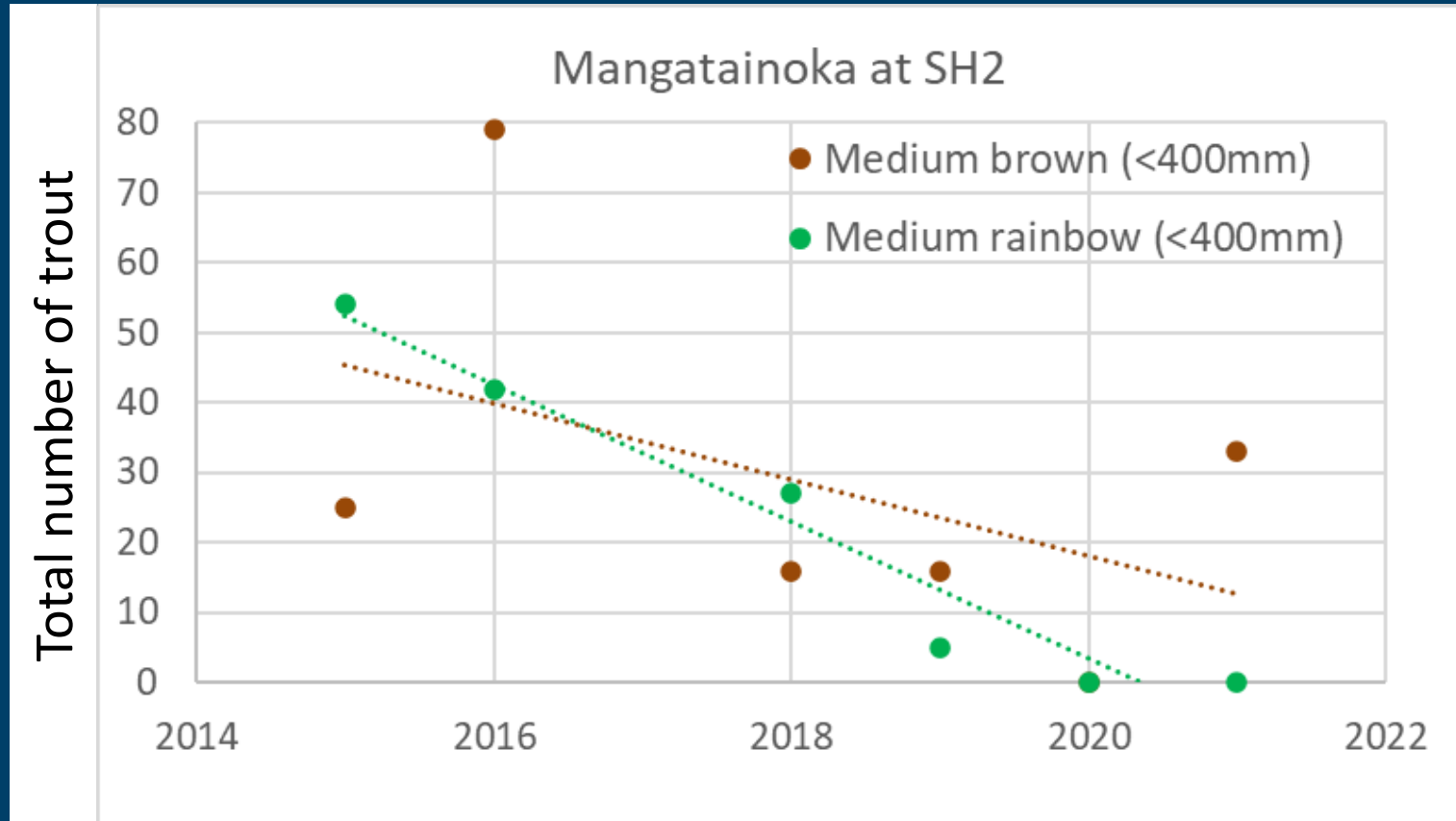
And how many trout were there?

YES

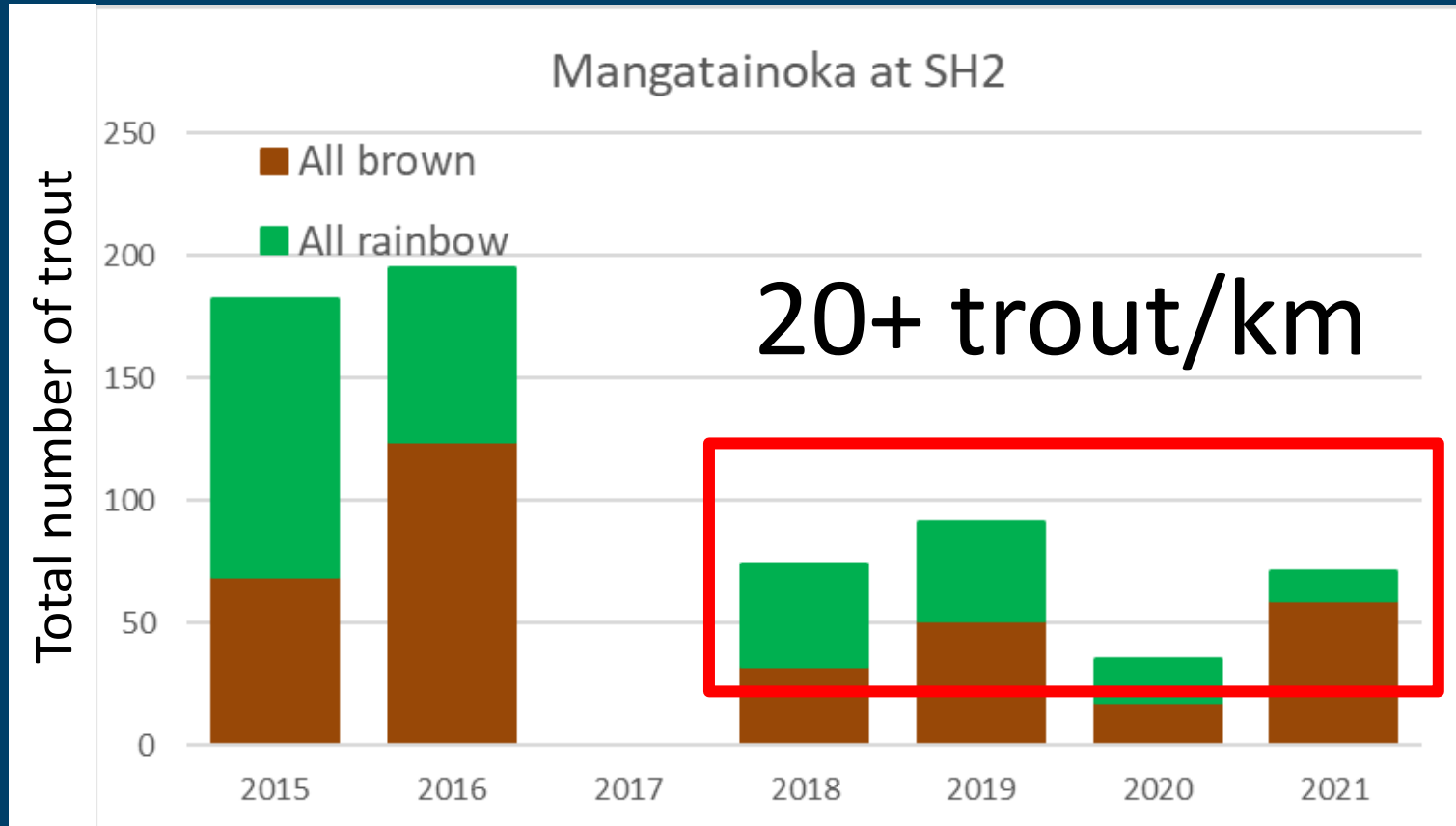
And how many trout were there?



And how many trout were there?



And how many trout were there?



What about access?

MANGATAINOKA RIVER



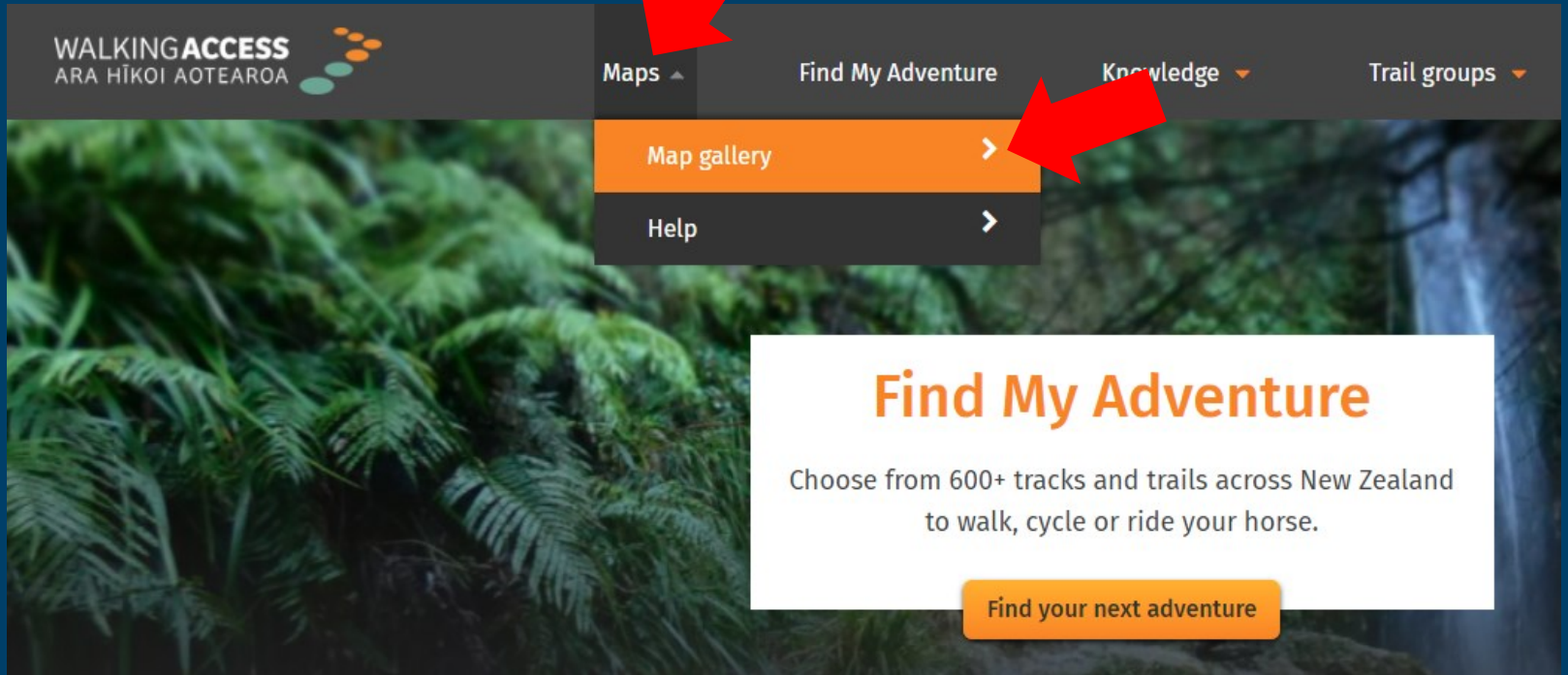
Wellington Region

What about access?



www.walkingaccess.govt.nz

www.walkingaccess.govt.nz



WALKING ACCESS
ARA HĪKOI AOTEAROA

Maps ▲ Find My Adventure Knowledge ▼ Trail groups ▼

Map gallery >

Help >

Find My Adventure

Choose from 600+ tracks and trails across New Zealand to walk, cycle or ride your horse.

Find your next adventure

www.walkingaccess.govt.nz

WALKING ACCESS
ARA HĪKOI AOTEAROA

Our Maps

Search [Log In](#)

About

Welcome to Our Maps! We've had an update to our system and map viewer. For more information on the new layout, please see the help section.

Our Maps allow anyone to view publicly accessible areas, tracks, conservation land and property information across New Zealand.

[Open this Map](#)

Public Access Areas Map
Displays a number of different forms of legal public access across New Zealand. Please note that legal access is not necessarily practical to use. Image: Jocelyn Kinghorn (Flickr), CC BY-NC-ND 2.0.

Categories Sort By Most Views

- All Maps
- Public Access
- Property Information
- Tracks and Trails
- Hunting and Fishing

Outdoor Access Map
Our all in one mapping tool. This map shows public access areas, property information, hydro parcels and tracks. Please note that legal access is not necessarily practical to use.

Public Access Areas Map
Displays a number of different forms of legal public access across New Zealand. Please note that legal access is not necessarily practical to use. Image: Jocelyn Kinghorn...

Property Information Map
Legal and title level data from Land Information NZ. This map shows property boundaries but does not allow users to see private information. Image: Land Information...

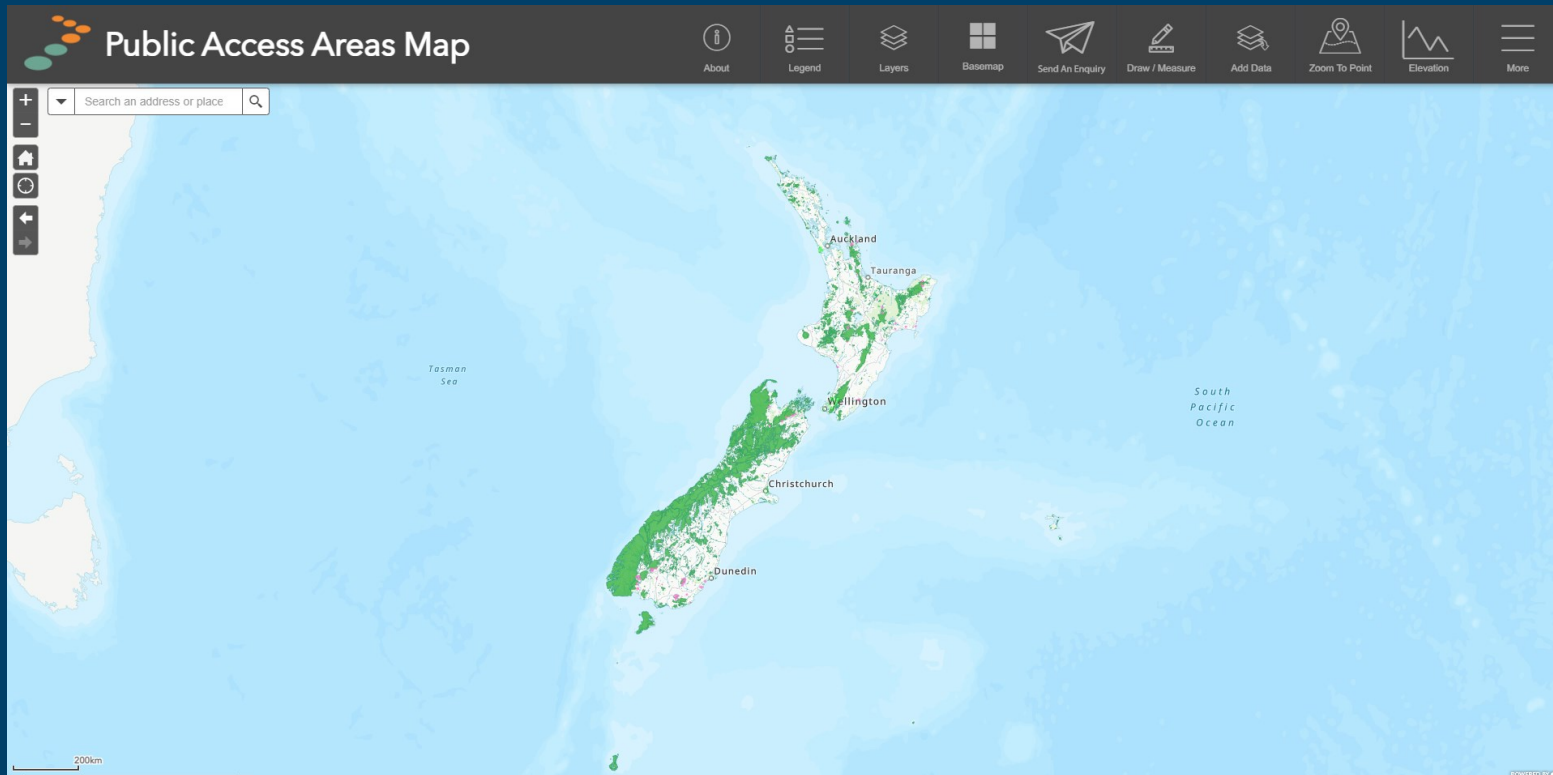
Hunting and Fishing Map
Fish & Game hunting and fishing access points, DOC huts and campsites, and public access areas. Note: legal access is not necessarily practical. Image: Jason Armstro...

Tracks and Trails Map
A high level recreational planning tool for a range of activity types. Includes local tracks and trails, DOC tramping tracks, Te Araroa Trail

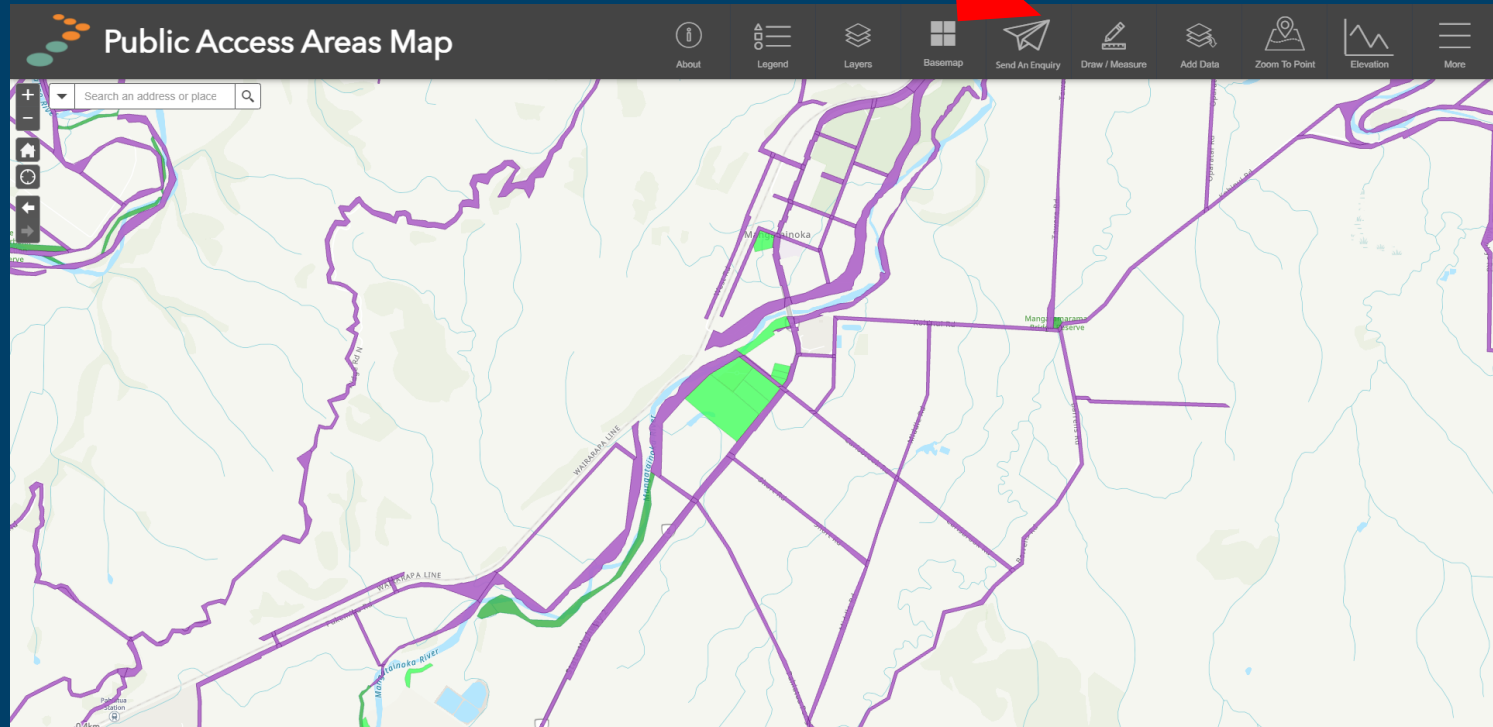
Help
Need help using our maps? Find in depth help to all aspects of the mapping system here.

Feedback
Got feedback about our maps? We'd love to hear it. Send us any comments, suggestions or issues you may have. Thanks!

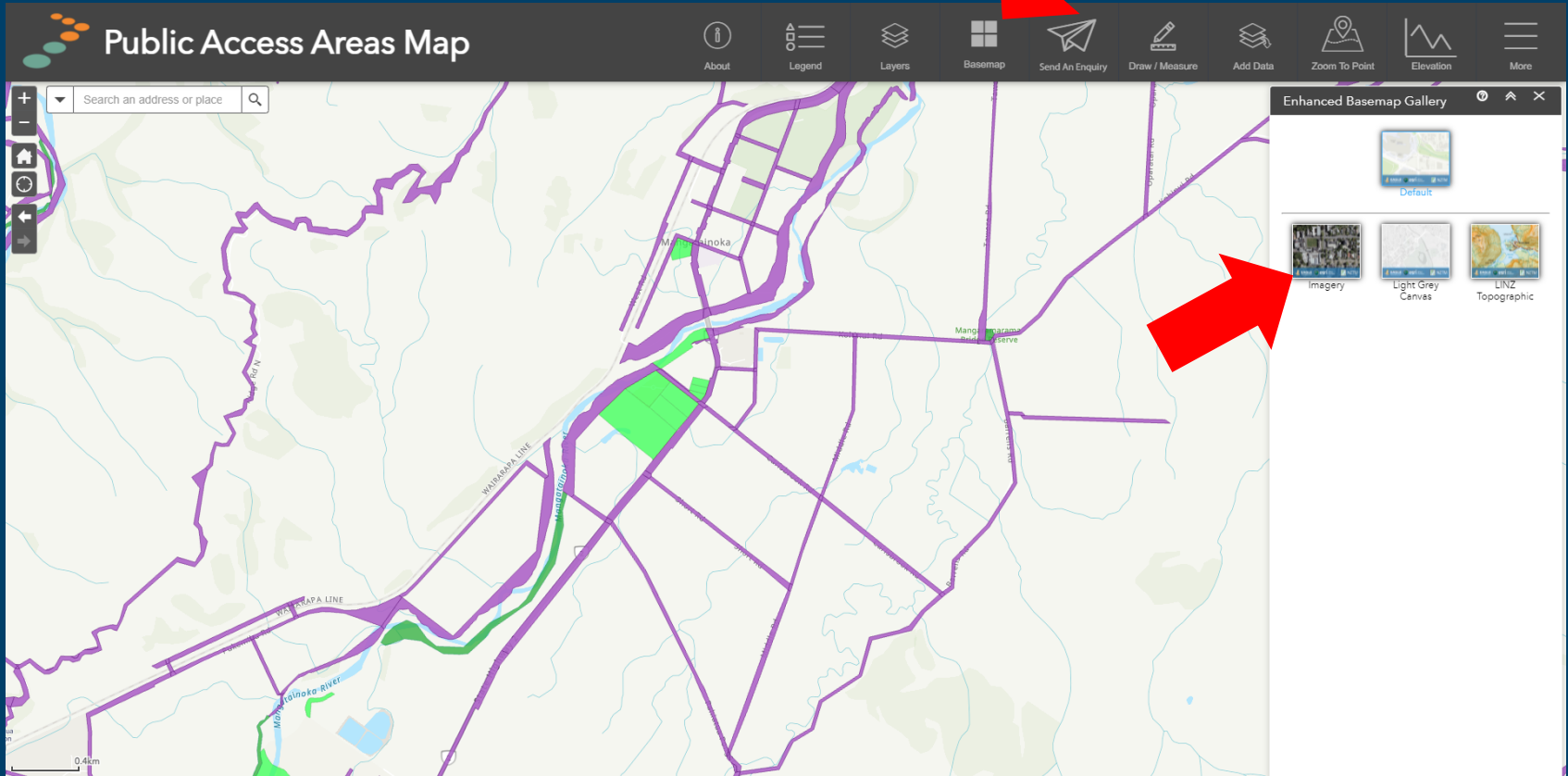
www.walkingaccess.govt.nz



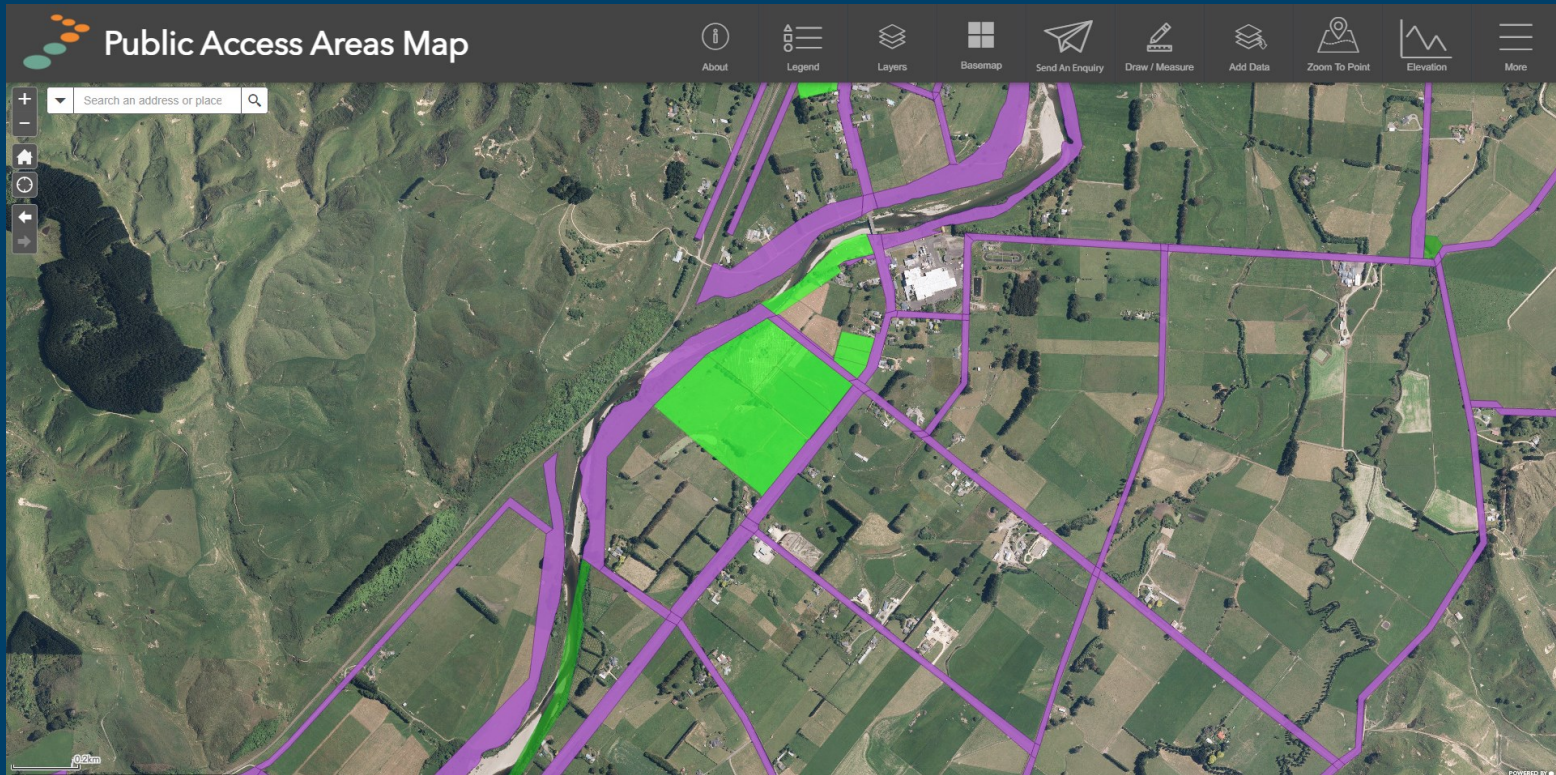
www.walkingaccess.govt.nz



www.walkingaccess.govt.nz



www.walkingaccess.govt.nz



www.walkingaccess.govt.nz

The screenshot shows the 'Public Access Areas Map' web application. The interface includes a search bar at the top left with the text 'Search an address or place'. A navigation menu at the top right contains icons for 'About', 'Legend', 'Layers', 'Basemap', 'Send An Enquiry', 'Draw / Measure', 'Add Data', 'Zoom To Point', 'Elevation', and 'More'. The main map area displays an aerial view of a rural landscape with a river and fields. A legend panel is overlaid on the right side of the map, titled 'Legend'. It lists 'Public Access Areas' with a purple square icon, 'NZ Road Parcels' with a purple square icon, and 'Reserve Land' with a green square icon. The map shows purple lines representing road parcels and green areas representing reserve land.

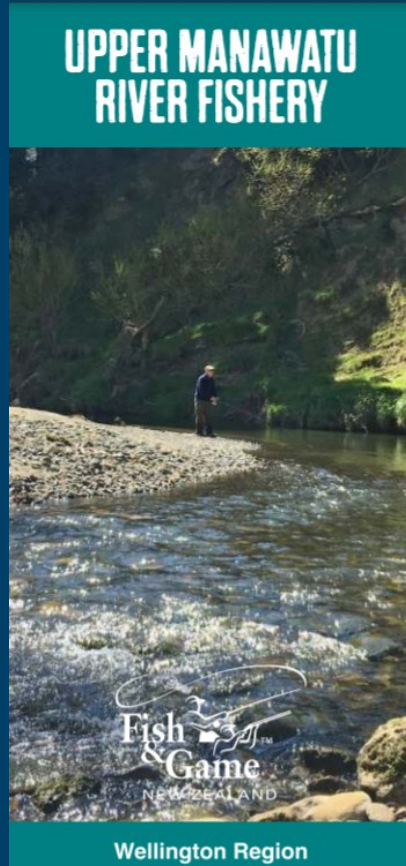
www.walkingaccess.govt.nz



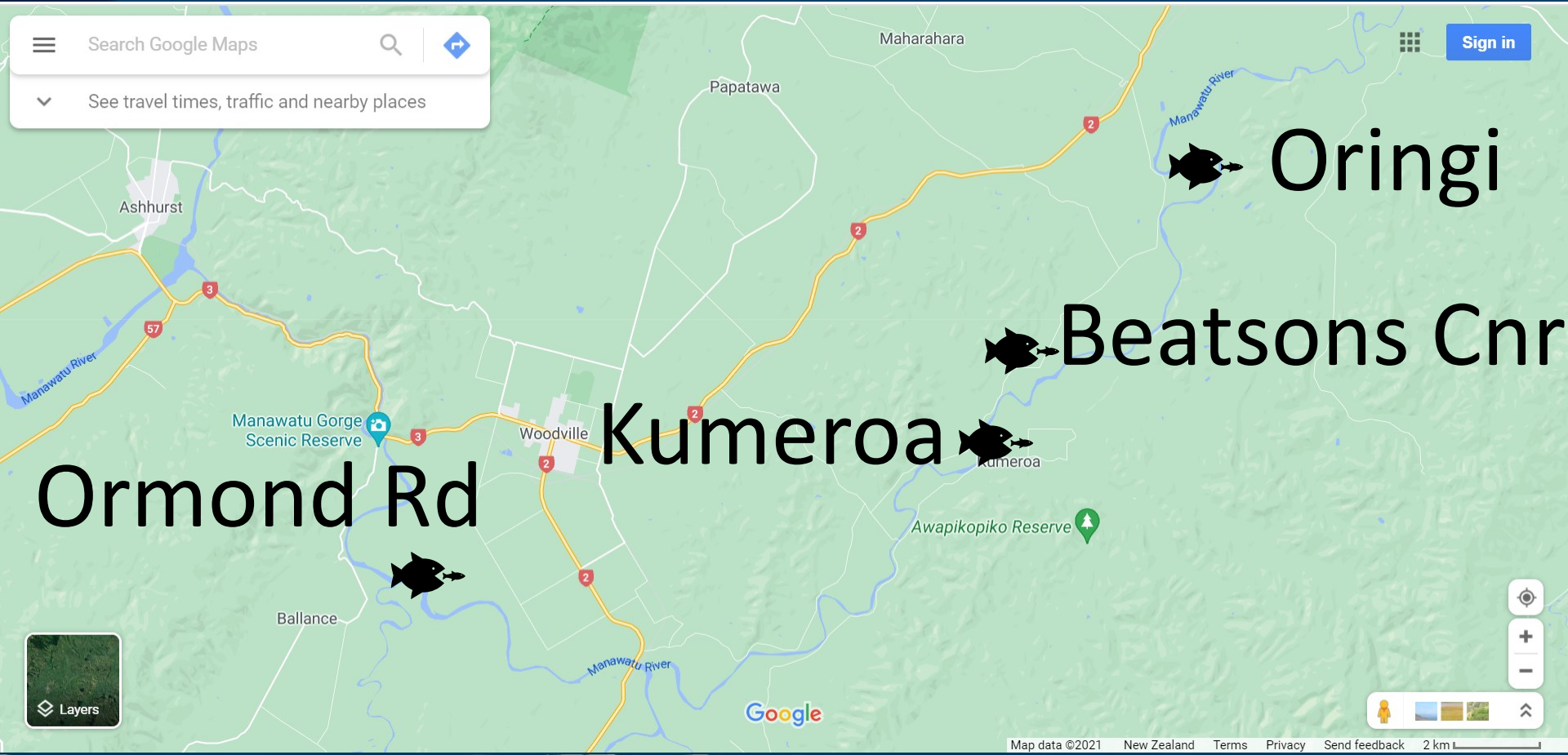
Recreational
reserve

16. James Rd

What about mid-Manawatu access



Mid-Manawatu Fishery



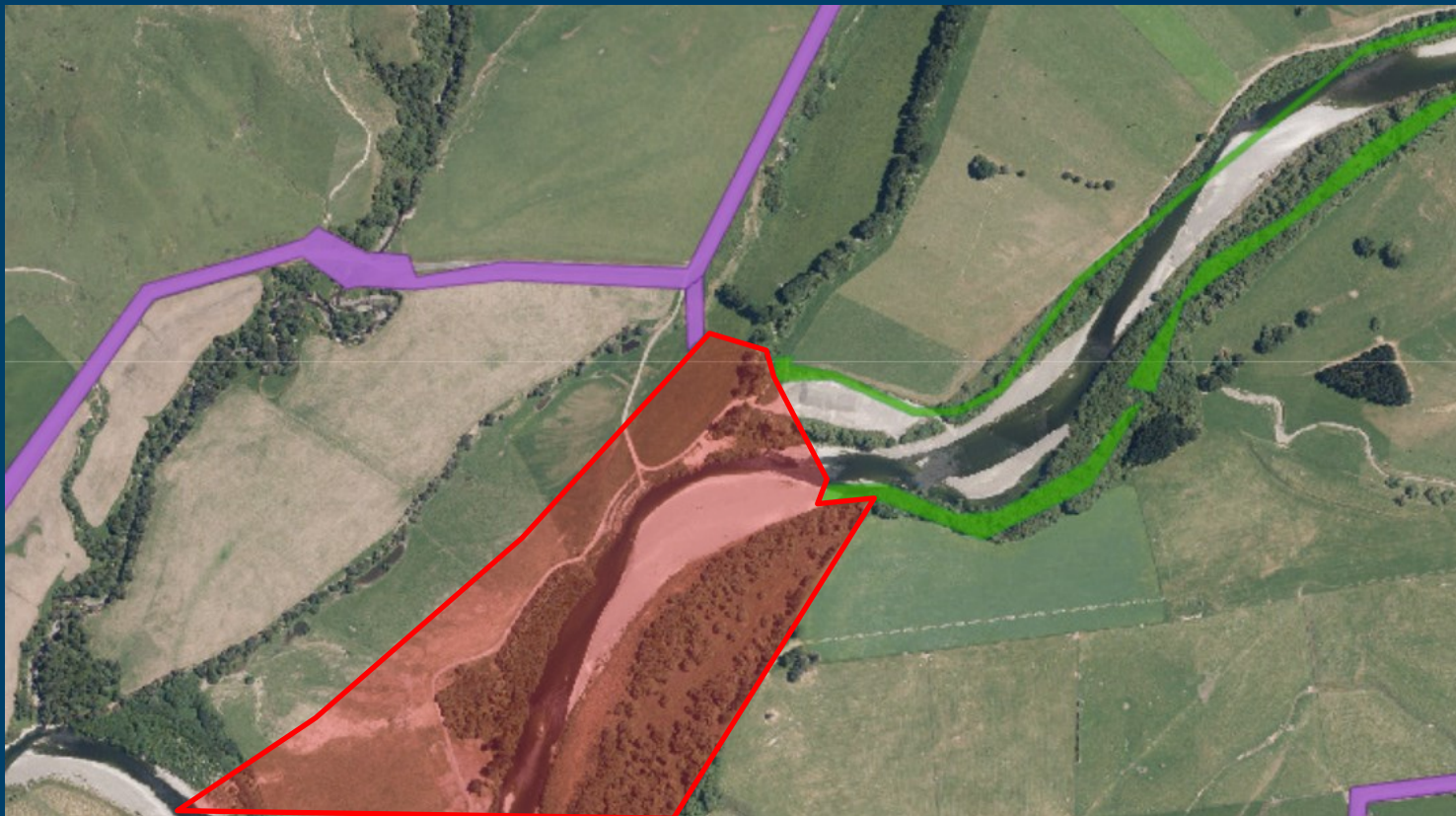
Oringi Mid-Manawatu



Beatson's corner



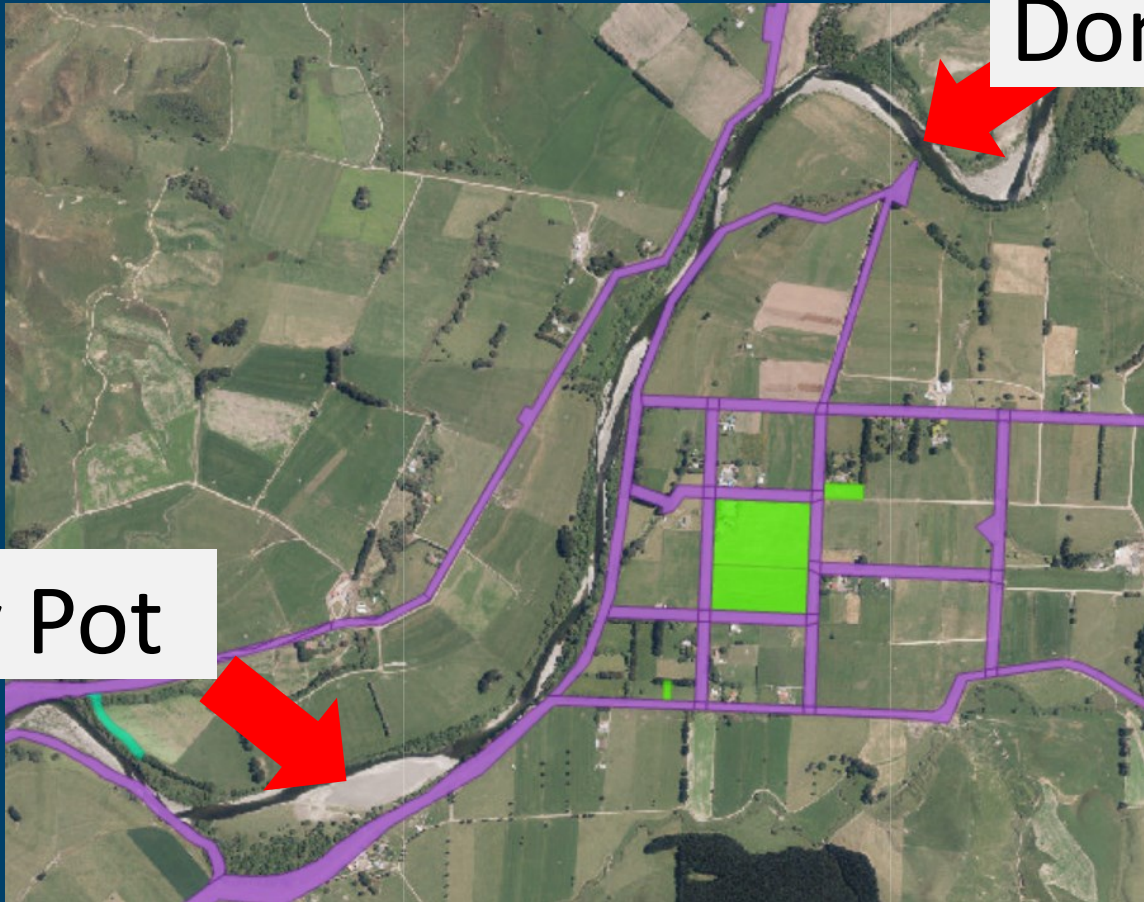
Beatson's corner



Kumeroa

Domain Rd

Honey Pot



Kumeroa – Honey Pot



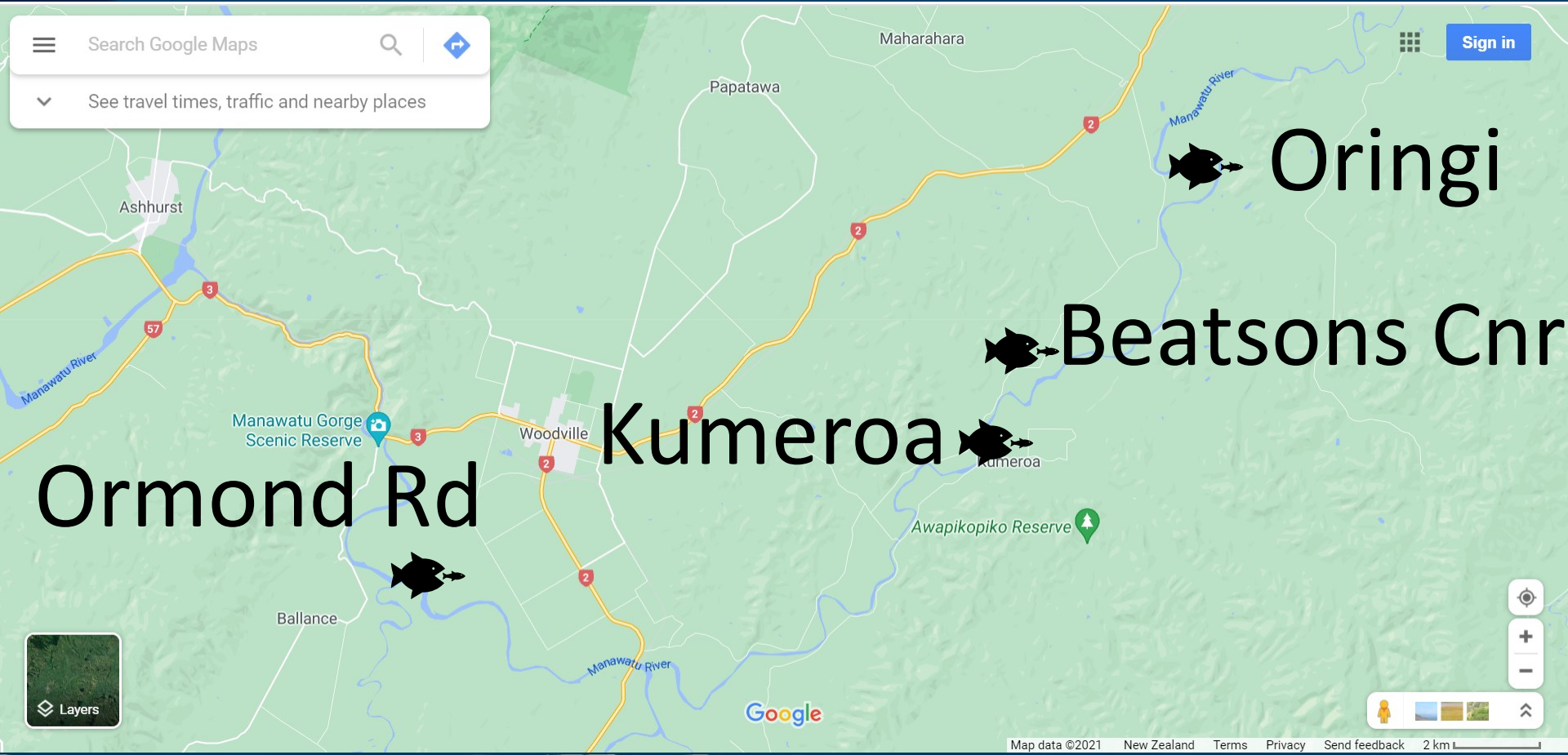
Kumeroa – Domain Rd



Ormond Road



Mid-Manawatu Fishery



Before you go

- Check river levels and turbidity

River Flow & Lake Info

River flow and lake level information is invaluable when planning your fishing trip.

Find out river flow and lake level information for the greater Wellington region using the links in this section:

Greater Wellington Regional Council River Bulldozing

Make sure your fishing plans aren't ruined by Greater Wellington Regional Council's bulldozers messing up our rivers.

[Click here for the latest schedule of river destruction.](#)

We know how strongly anglers and other members of the public feel about this destructive activity. Complaints can be directed [here](#).

Region Wide Links:



River Destruction in Wellington

SELECT YOUR REGION



Select a region to discover the role of local Fish & Game Council, find freshwater fishing and

Before you go

- Check river levels and turbidity

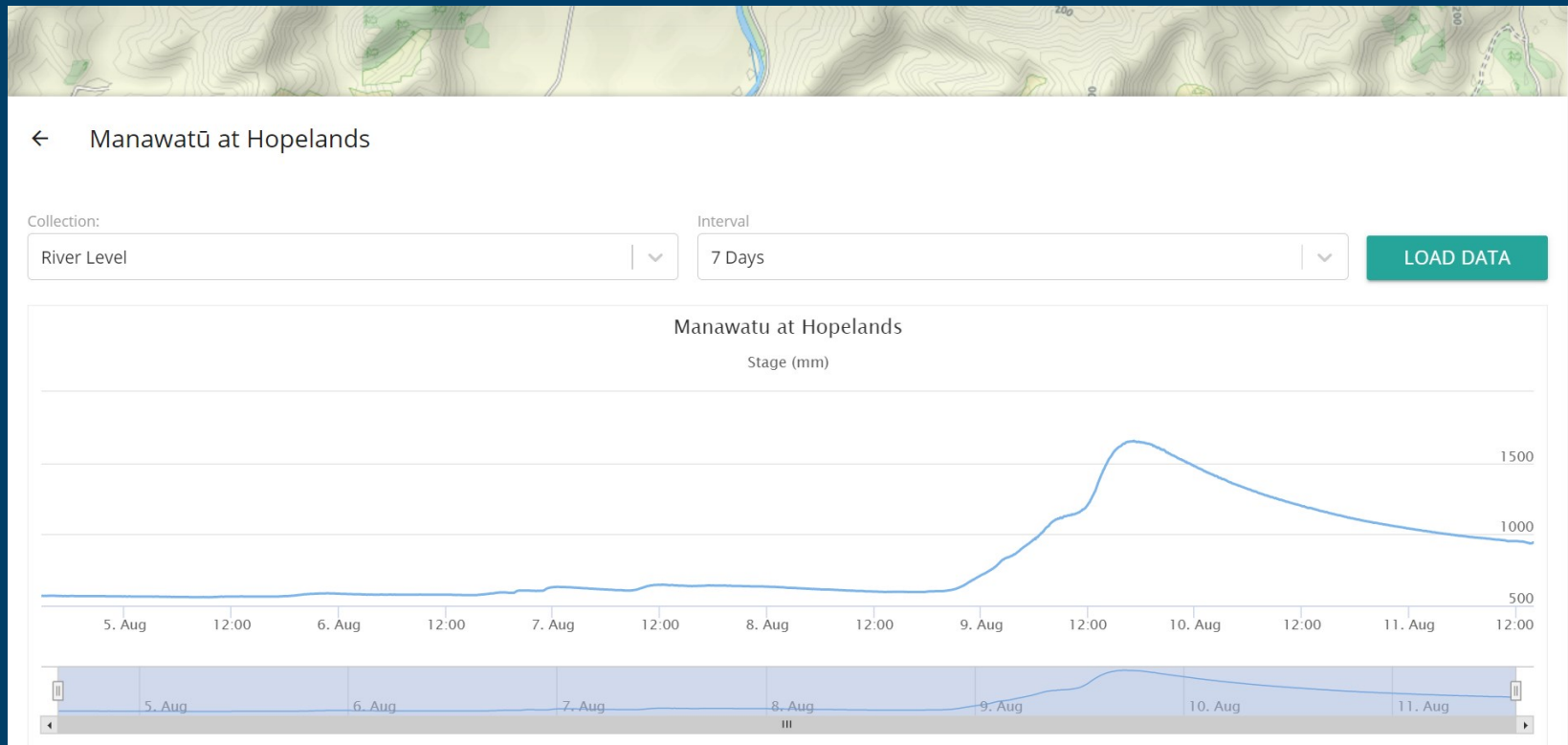
Palmerston North Region:

River gauge map

- Hautapu at Alabasters
- Makakahi at Hamua - 1700mm
- Makuri at Tuscan Hills
- Manawatu at Hopelands - 700mm
- Manawatu at Teachers College - 950mm
- Manawatu at Upper Gorge
- Manawatu at Weber Rd - 1400mm
- Mangatainoka at Larsons Rd
- Mangatainoka at Pahiatua Town Bridge - 2100mm
- Oroua at Almadale Slackline - 1250mm
- Pohangina at Piripiri
- Rangitikei at Pukeokahu - 3400mm
- Rangitikei at Mangaweka - 3260mm

Before you go

- Check river levels and turbidity



Lower North Lowdown



November 11, 2021

Break Out The Spinning Gear

Being a considerate angler

- Park respectfully
- Leave gates as you find them